

# CHIVASSO

FABRICS AND MORE BY CHIVASSO

ALL ABOUT · ALL  
ABOUT · ALL ABOUT  
ALL ABOUT · ALL  
ABOUT · ALL ABOUT  
ALL ABOUT · ALL  
ABOUT · ALL ABOUT  
ALL ABOUT · ALL  
ABOUT · ALL ABOUT  
ALL ABOUT · ALL  
ABOUT · ALL ABOUT  
ALL ABOUT · ALL  
ABOUT · ALL ABOUT









## ALL ABOUT PRINTS

Fashion is a philosophy of life for us and we promptly apply the latest international trends for exclusive interiors.

We want to keep surprising and delighting our customers. Here we rely on distinctly self-confident and bold statements in our choice of printed fabric designs. Particularly striking and typical of Chivasso prints is the colourful and expressive character of these decorative fabrics.

Fashionable colours are of course always featured.







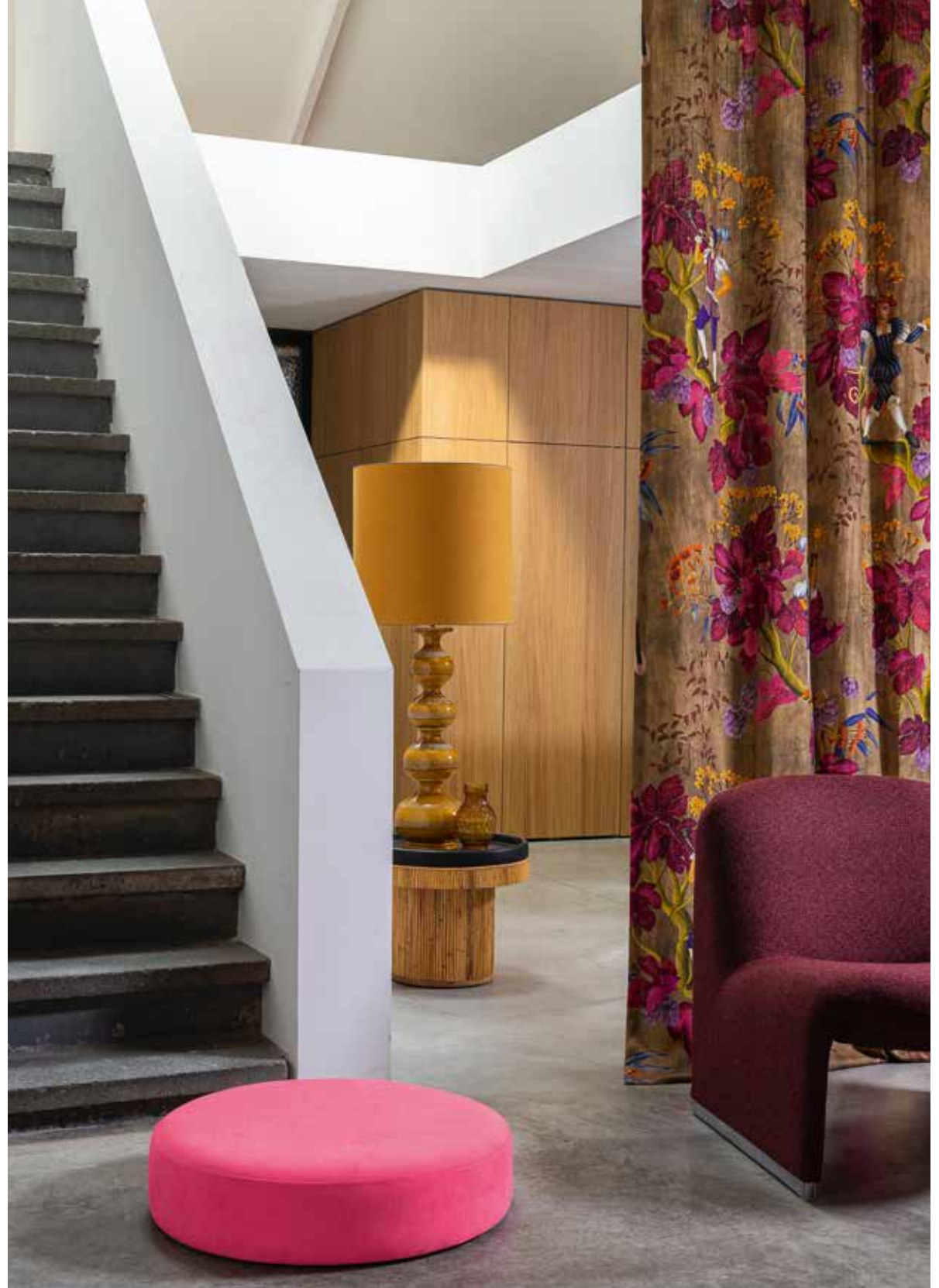


BONSAI REBOOT · CH2955 · HOT MADISON REBOOT · CH1249



FAIRYTALE FOREST · CH3147 · BONSAI REBOOT · CH2955

FAIRYTALE FOREST · CH3147 · BONSAI REBOOT · CH2955 · HOT MADISON REBOOT · CH1249



STRUCTURED PLAINS COMBINE WITH ARTFUL PRINTS FOR MODERN LIVING

BY CHIVASSO 





## ALL ABOUT COLOURS

It is not only our qualities that are up to date but also our colours. We love to play with contemporary colour combinations and celebrate the neutral classics. In 2023 the key colours are ones that conjure up associations with a form of balance and well-being. One of the biggest colour trends emerging for 2023 is the use of chalky pastels like Aloe Vera, bluish Glacier, Ice Flow or Blue Haze. Lush Nude, Malve or Desert Dust add warm accents, while a light Citron adds a refreshing touch.





ALL ABOUT  
COLOURS

HEAVEN'S GARDEN CH3153 · EVER WITH YOU CH3187  
HONEST REBOOT CH2985 · BONSAI REBOOT CH2955



HEAVEN'S GARDEN CH3153 · EVER WITH YOU CH3187

ULTRA SOFT CHENILLES WITH SOFT AND TRENDY COLOURSHADES

BY CHIVASSO 

EVER WITH YOU CH3187 · HONEST REBOOT CH2985 · BONSAI REBOOT CH2955 · HEAVEN'S GARDEN CH3153 · GLOSS BEAUTY CH3189







## ALL ABOUT FABRICS WITH A NATURAL LOOK

It has always been part of our philosophy to seek and celebrate the beauty of materials and textiles in their simplicity and naturalness. That's why we believe in linen or linen looks for each and every interior. Our qualities captivate with their soothing neutrality. Minimalist worlds of colour underline tactile furnishings characterised by sensuousness and velvety softness. The materials speak for themselves. Extremely cosy, slinky materials combine with tonal and neutral looks, soothing luminosity, and calming beiges to give this interior theme longevity and sustainability.











## ALL ABOUT FABRICS WITH SOFT SHINE

Shiny, brushed, matt, blackened or gold-plated – metal and its versatile finishes are celebrating a comeback in interior design, while they still belong to the classics.

Elegant metal tones such as gold, copper and bronze develop a modern style when used with soft pink and neutral grey. At the same time, metals add character and sophistication. Copper, in particular, remains at the top of the trend list. For good reason: the reddish radiance of the metal is both modern and fabulously romantic.









GLOSS BOSS CH3188 · GOLD RUSH CH3195 · GOLDEN STAR CH3162



GLOSS BOSS CH3188 · GOODNESS CH3164

SOFT VELVETS AND ULTRA LIGHT FABRICS IN HUGE COLOUR PALETTES

BY CHIVASSO 

GLOSS BOSS CH3188 · GOODNESS CH3164 · GOLD RUSH CH3195







NEW CHAPTER CH3184 · NEW WORLD CH3170

## ALL ABOUT FABRICS WITH FR PERFORMANCE

We want our lives and homes to be uncomplicated, smart, safe, sustainable and meaningful. Qualities with very good care properties simplify life and create additional living comfort. Flame-retardant qualities enhance safety within your own four walls. Increasing the useable lifetime of fabrics, both through the durability of the fibres and the timelessness of the designs, are ways to introduce more sustainability into textile interior design. Our novelties do not look as though they focus on function or performance, but make a stylish, casual and smart impression.





ALL ABOUT FABRICS

WITH PERFORMANCE

NEW URBAN CH3186 · NEW CHAPTER CH3184  
NEWCOMER CH3171



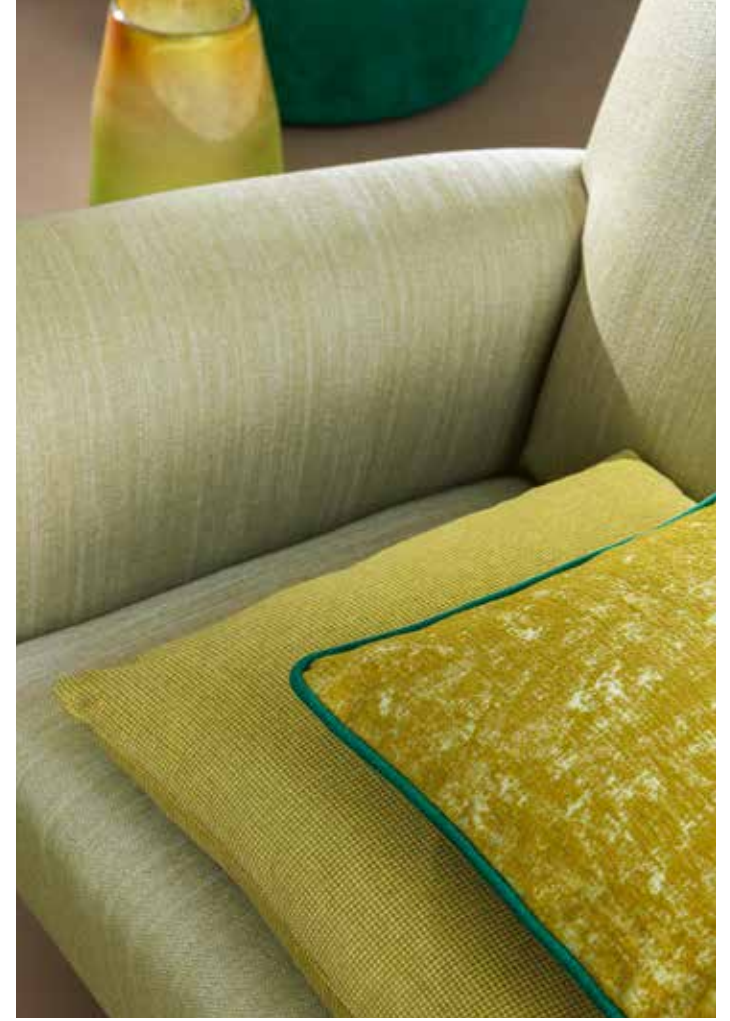
HOT MADISON FR CH3099

SAFE HOME LIVING WITH STRUCTURED AND STYLISH FLAME-RETARDANT  
FABRICS BY CHIVASSO 



HOT MADISON FR CH3099









GREENHOUSE CH3165 · GAMECHANGER CH3169



GREENHOUSE CH3165 · GAMECHANGER CH3169

## ALL ABOUT FABRICS WITH MINDFUL PERFORMANCE

We see a grave increase in trends that, for example, arise from the consequences of climate change and necessitate adaptations for more sustainability, or that emerge from the need to save resources. To the greatest possible extent, we rely here on recycled fibres, using a minimum of 50% and increasing this all the time, or on natural organic fibres. Of course, our sustainable qualities are tested for ease of care and durability, just like all our other articles, in order to guarantee the highest quality standards.











SUMMER KISS CH3193 · SUMMER LOUNGE STRIPE CH3196  
SUMMERVIBES CH3181 · SUMMER LOVIN CH3192

## ALL ABOUT INDOOR / OUTDOOR FABRICS

When the weather is wonderful and sunny, we prefer to spend our days outside. Enjoying a holiday from everyday life in a place that immediately conveys a feeling of well-being. This image was the inspiration for our new outdoor collection. A cosy and feel-good outdoor atmosphere for exclusive lifestyles is promised by our charming outdoor qualities on comfortable lounge furniture, for stylish terraces, loggias, exclusive rooftop and pool areas. Our creative products in the ColorProtect line by Chivasso are casual all-rounders and offer a smooth transition from indoor to outdoor areas.





ALL ABOUT  
INDOOR/  
OUTDOOR  
FABRICS

SUMMER LOVE CH3191 · SUMMER LOUNGE STRIPE CH3196  
SUMMERS VIBES CH3181 · SUMMER LOUNGE CH3194



SUMMERS VIBES CH3181 · SUMMER LOUNGE CH3194

EXCLUSIVE AND CASUAL LIFESTYLES WITH OUTDOOR FABRICS

BY CHIVASSO 



SUMMER LOVE CH3191 · SUMMER LOUNGE CH3194 · SUMMER LOUNGE STRIPE CH3196





SASCHA UNRUH  
WAREHOUSE / CUTTING WALL COVERINGS



KATRIN AHRENS · HEAD OF PRODUCT  
DEVELOPMENT CHIVASSO



MARIO DE MARI  
WAREHOUSE / CUTTING FABRICS



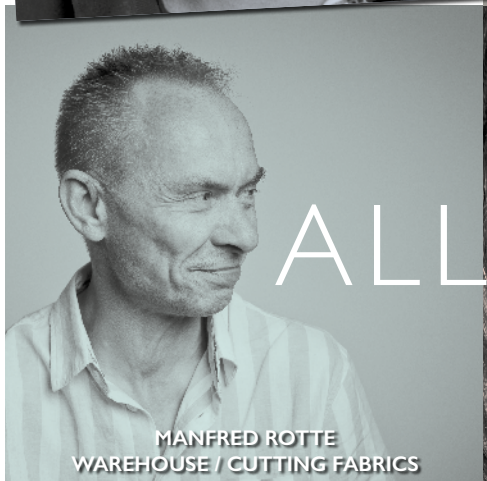
DIANA HOLTSMANN  
VISUAL COMMUNICATION / PRINT MEDIA



MARTIN REISS  
PRODUCT MANAGEMENT



ALEXANDRA KNAAK  
TRADE MARKETING



MANFRED ROTTE  
WAREHOUSE / CUTTING FABRICS



SANDRA TICKLE  
HEAD OF CUSTOMER SERVICE EXPORT



CHRIS-JACOB SCHMINNES  
MANAGEMENT



VASSILIKI KOLIOS  
CUSTOMER SERVICE INDUSTRY



DENNIS VROLIJK  
PRODUCT MANAGEMENT CHIVASSO



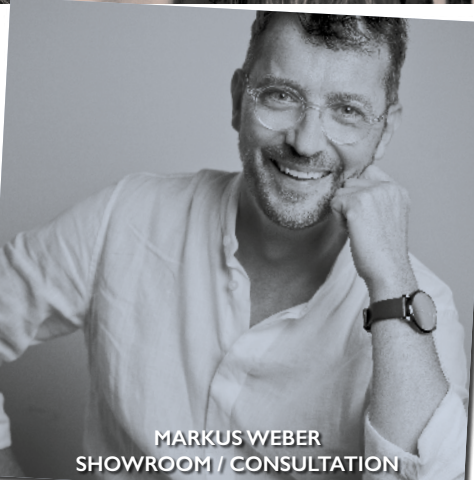
HEIKE MEYER  
PROCUREMENT

# ALL ABOUT US

# PEOPLE BEHIND OUR PASSION



PAULINE GEHLE  
PRODUCT DEVELOPMENT CHIVASSO



MARKUS WEBER  
SHOWROOM / CONSULTATION



KATJA BRACKELMANN  
HEAD OF DIGITAL COMMUNICATION



SASCHA ROTTMANN  
SHIPPING / LOGISTICS



ANNA GIESE  
PRODUCT DEVELOPMENT CHIVASSO



CHIVASSO

[www.chivasso.com](http://www.chivasso.com)





CHIVASSO

[www.chivasso.com](http://www.chivasso.com)



RK1150



**JAB**  
ANSTOETZ  
GROUP



Copyright © 2022 JAB Josef Anstoetz KG, Germany

No part of this publication may be reproduced without prior permission of JAB Josef Anstoetz KG.  
Chivasso Fabrics and More is a member of the JAB ANSTOETZ Group, Germany

