

compose

*in pattern & colour,
find your design identity.*

Contemporary interior design offers you a vast spectrum of designs, colours, styles and patterns. This gives you the freedom to find your own window of opportunity.

JAB
ANSTOETZ
GROUP

Copyright © 2015 ATMOSPHERE BY CARLUCCI DI CHIVASSO
No part of this publication may be reproduced without prior permission of Chivasso BV.
Chivasso is a member of the JAB Anstoetz Group.



atmosphere
FABRICS AND WALLPAPERS BY CARLUCCI DI CHIVASSO



trigger

your imagination with new influences & experiences

With those sparks of inspiration start creating your own home. Expand your point of view with the diverse collection of fabrics you will find in Carlucci Atmosphere.



Major House CA | 271, Trono CA | 280, Tomorrows Land CA | 269, Palazzo Velvet CA | 175, Zebra CA | 284, Specch CA | 285, Appearance CA | 270

appearance

for the eclectic & bohemian.

This large jacquard woven damask design has a washed-out water-colour appearance and a fresco like look. These fabrics are perfect for any eclectic or bohemian style interior, but can of course be teamed with a cleaner more sophisticated style for a more subtle look.



compose

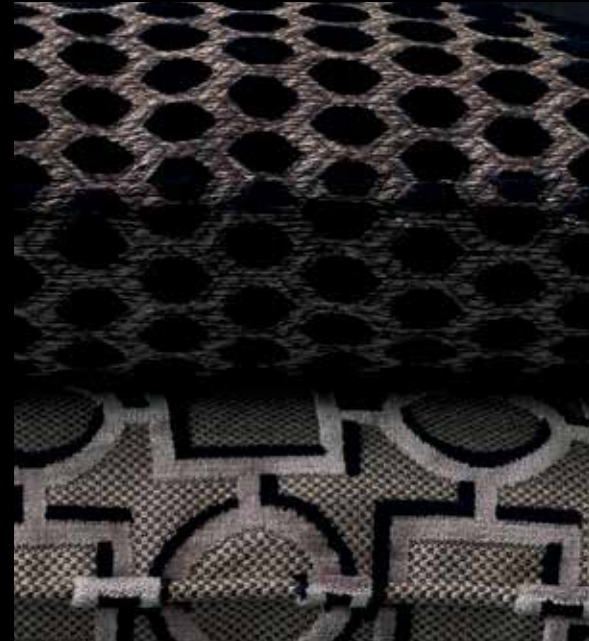
*in pattern & colour,
find your design identity.*

Contemporary interior design offers you a vast spectrum of designs, colours, styles and patterns. This gives you the freedom to find your own window of opportunity.

We would like to expand your point of view. With atmosphere we created a new perspective, by recreating a sleek and sophisticated yet warm and nostalgic atmosphere. Combining great classic design and architecture with luscious contemporary fabrics. With Carlucci Atmosphere we are paying homage to the modernist legacy, by juxtaposing the highly decorative fabrics with their functional environment. This contrast in design and philosophy sharpens the mind and provokes the imagination. This collection encompasses a range of different styles, textures and colours. Elaborate jacquards are combined with luxurious velvets in enriched colours. Opulent finishes and intricate surfaces give the fabrics and wallpapers a unique quality and a sensational character.

Expand your point of view and find your own window of opportunity with the diverse collection of fabrics you will find in Carlucci Atmosphere.





atmosphere

FABRICS AND WALLPAPERS BY CARLUCCI DI CHIVASSO



A close-up, angled view of a fabric with a complex, repeating geometric pattern. The pattern consists of interlocking shapes, including circles and squares, creating a dense, architectural look. The colors are muted, likely in shades of brown, beige, and dark grey.

scope

*classic design &
exquisite materials*

Classic design is combined with a soft deep velvet in this fashion inspired collection. Architectural repetition can be found in the different patterns. These highly decorative fabrics include, tiled, dotted and scribbled designs. Each design is woven in two colours creating an elegant graphic appearance.



ghost walls

surface textured wallpaper

These wall coverings all have an understated elegance. Different subtle designs and structures were created by employing different techniques. Including many delicate all over patterns. Marble, wood, bamboo eggshell, leather and stone are just some examples. All have a soft chic metallic shine in natural colours. Cover large areas for a soft elegant look. Create a timeless understated look with these wallpapers, whether you are redecorating your office space or creating a luxury boudoir.



offbeat

delicate & intricate

These show-stopping fabrics include fashion inspired qualities and designs. Beautiful intricate small all-over designs are woven in a sophisticated satin. The delicate designs, such as a small dot, a meander and a larger 'pixelated' design are formed in two contrasting colours. The inspiration for this collection came from gentlemen's neck ties and handkerchiefs. Use these classic designs in vibrant colours, such as bottle green, electric blue and magnificent orange to add colour, elegance and vibrance to your interior. These fabrics are all room-high so are great for curtains.





Curtain Magnetism CA1320



Palazzo Velvet, CA1175, Obscure CA1306, Offbeat CA1304



tendenza

casual chic: raffia & linen

These exciting raffia like qualities are highly luxurious and have a deep three-dimensional feel and an opulent layered look.

This high-fashion article comes directly off the runway and was inspired by contemporary handbag fashion. The natural look fibres are dyed in colours ranging from subtle non-colours to optimistic statement colours such as electric blue, enriched green and vivid orange.





titanium

sophisticated & strong

These two-tone fabrics are very strong and durable. They have a subtle shine. Different textures are included, ranging from a very fine weave to a more coarse rugged woven quality. Metallic colours, including copper, bronze, gold and platinum were chosen to highlight the contrast in matte and gloss.



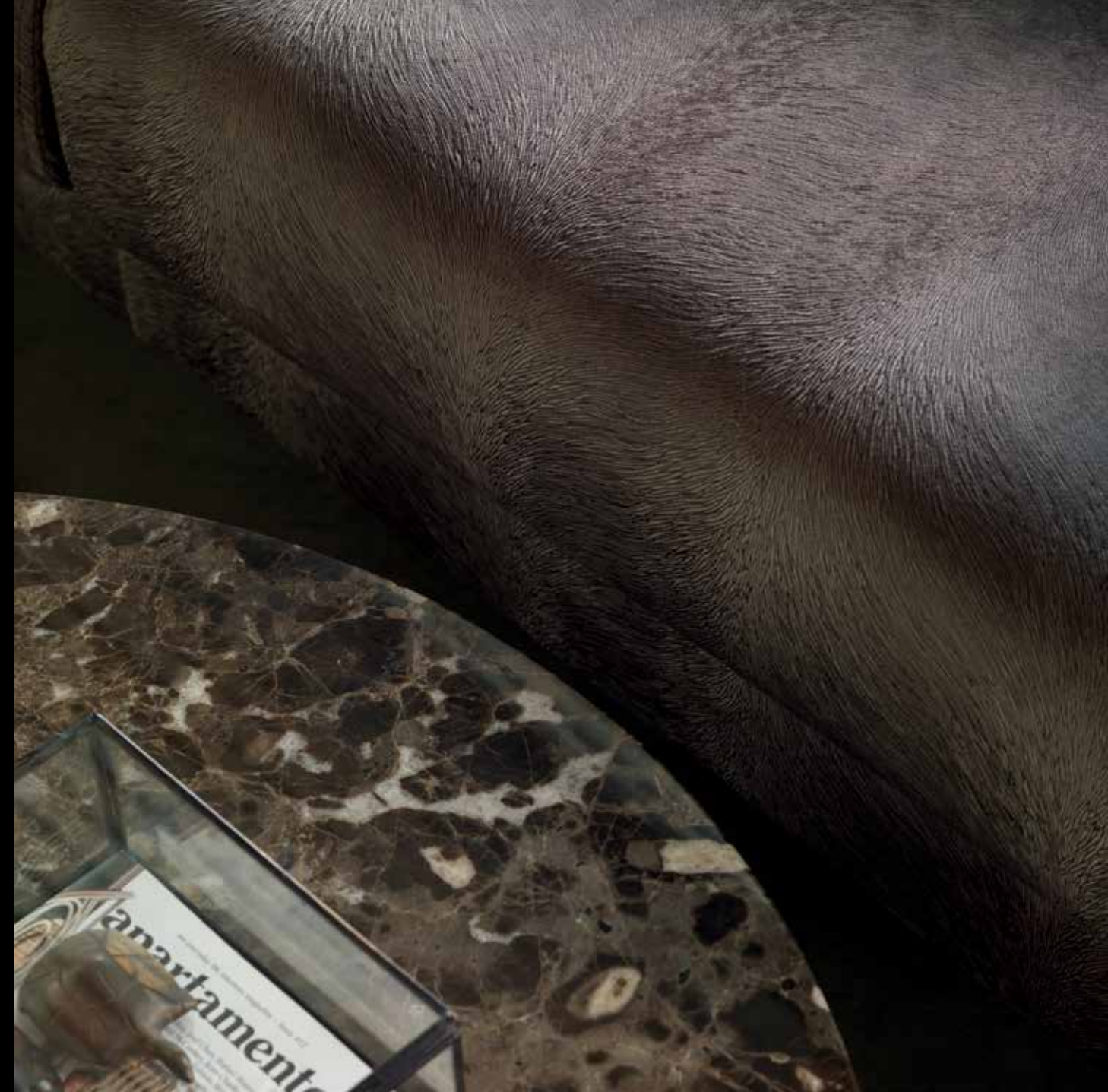
Thorium CA1295, Obvious CA1287

Thorium CA1295, Sensation Silk CA1275, Tin CA1294, Tacito CA1282

pistoia

rich textured velvets.

This dyed velvet is foil embossed with a delicate pattern, giving it an almost three-dimensional look. The other is dyed with a bi-colour technique creating fine stripes. Subtle non-colours are highlighted with deep, strong contemporary colours.







Palazzo Velvet CA1175, Pistoia Velvet CA1292, Obscure CA1306, Off Beat CA1304





movement

abstract, graphic prints

Op art, geometric shapes and abstract graphics form the basis of this eye-catching print collection. Different base cloth was chosen for each of the different patterns. Some are printed on very sheer and transparent qualities for a very subtle accent. Others are printed in soft metallic colours on an opaque satin base for a sophisticated elegant look. Natural earthy and faded colours were chosen as well as a few eye-catchers like cobalt blue, bright orange, acid yellow and bottle green.



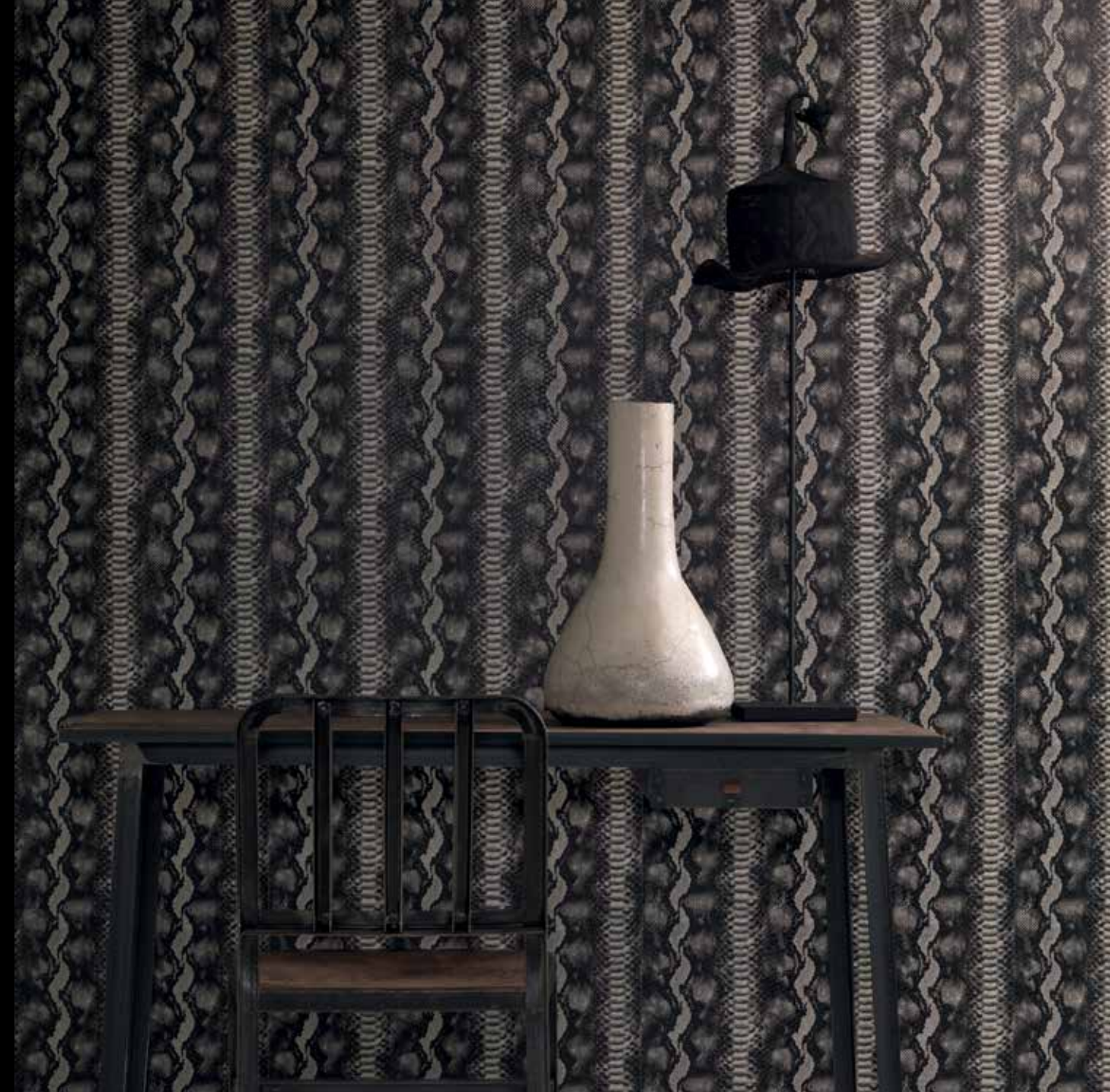
Magnetism CA1320



phantom

rockstar chic & wild allure

These embossed wall coverings are bold and extravagant in design but are understated and elegant in colouring. The patterns are fun and should not be taken too seriously. The designs include, mock-croc, snake and other animal skins. Combine these with an understated, maybe even rugged interior for an opulent cheeky rockstar atmosphere.





Hazard CA1297, Headhunter CA1300, Curtain: Homeward CA1301

headhunter

casual chic: raffia & linen

This contemporary micro-fibre fabric is printed with a high gloss animal print design. This creates a leather look effect on a soft material. The heat seal print is very glossy, giving it a lacquered look. Which creates a high contrast with the matte base material. Although this fabric is very suitable for upholstery it can also be used for curtains with a spectacular look.



victorious

classic & timeless

Two classic designs, in beautiful soft non-colours. These jacquard woven fabrics are suitable for both upholstery and curtains. Combine these linen look qualities with linen curtains for a delicate look.



Gather CA8223



Victorious CA 1307, Viceroy CA 1308, Pistoia Velvet CA 1292

